

## Features

### Compatible with Simplex ES Net and 4120 Networks

#### TrueSite Graphic Annunciator general features

- Simplex fire alarm network connected graphical interface
- Supports standard fire service annunciation icons to provide firefighter and first responders with critical fire response information
- Custom alarm and system messages can intuitively guide emergency responders. Important information including HAZMAT locations and contact information can be quickly presented
- Color graphical annunciation with capacity for up to 250,000 ES Net network points or up to 100,000 4120 network points. See [ES Net version compatibility](#) and [4120 version compatibility](#) for additional details.
- Quad monitor support allows multiple active windows such as putting the Alarm List Window on one monitor and the Graphics Window on another, with up to 4 total supported monitors
- Configurable coverage zones allow user defined areas or zones within a graphics screen to be highlighted to indicate the area of activity without zooming into the point of interest
- Captive or Non-Captive modes. Captive mode supports dedicated annunciator operation. Non-captive mode supports annunciator operation with other Windows applications, including word processing and spreadsheet, where annunciator activity takes precedence.
- Extensive historical logging with up to 500,000 events. Information is compatible with spreadsheet and database programs for report customization
- Available optional connections for printers or other compatible systems
- Compatible with Windows 7 and 10 Professional or Enterprise operating systems.

#### Security features

- Supports 8 to 16 alphanumeric passwords with configurable lockout for quantity of failed attempts
- Multiple password-controlled operator levels with selectable feature access

#### Agency Listings

- UL 864 as Fire Alarm Control Unit Annunciator (UOXX.S771)
- UL 2610 as a Commercial Premises Security Alarm Unit (AMQE.S771)
- ULC/ORD-C1076, Proprietary Alarm System Annunciator (APOU7.S771)
- ULC-S527 as Fire Alarm Control Unit Annunciator (UOXX7.S771)

#### Additional annunciator system features

- **TrueSite Workstation Mobile Client** allows compatible iOS and Android devices to access system information
- **Export to XML** allows TrueSite Workstation data to be easily exported for report generation and customization
- **Node Name** supports including a description of the specific building or area associated with a point in the annunciator views and reports
- **Web Browser Command Link** enables the ability to easily call up an external web page or link, including webcam, with a single command button on a graphic screen
- RAID 1 Support provides a real-time mirror-image on a secondary hard drive. Operation automatically transitions to the alternate drive on a drive failure without loss of operation. RAID support is available to systems that do not use the Backup Utility.



Figure 1: TrueSite Graphic Annunciator, optional second monitor with expanded desktop shown

- You can configure Backup Utility to automatically backup specified directories, including TSW job data, to the secondary hard drive. The Backup utility is available to systems that do not use RAID.
- Sound files (WAV) can be used to create custom audible status annunciation using local onboard speakers
- Fahrenheit or Celsius temperatures can be displayed for screens showing heat sensor temperatures

#### Graphic screens details

- **Floatable and dockable windows** allows windows to either be fixed (docked) or floatable
- **Pan-and-zoom features** allow precise dynamic navigation within a graphic screen for rapid and convenient selection of the area of interest
- **Auto-jump** allows the screen view to automatically jump to a graphic at a predetermined zoom level with the active device centered on the screen; alternately, the system can be selected to auto-jump to the Alarm List window
- Over 30,000 custom field generated and edited graphic screen capacity is available
- Multiple import and export formats are supported. Refer to [Graphics screens](#) for details

#### Additional Fire Alarm Network capabilities

- Multiple annunciators can be nodes on the same fire alarm network to provide redundant operations for improved survivability
- Connect to up to seven separate network loops
- Graphical diagnostic tools identify network node and loop status
- Provides event printing, with compatible printer, view or print of status and service reports, TrueAlert Self-Test reports, and print graphic screens. See Table 21 for printing details
- Compatible with Information Management Systems (IMS) and Graphic Command Center (GCC) on the same fire alarm network
- 2120 Multiplex Serial Line Interface (SLI) allows connection to up to eight, 2120 Multiplex systems

#### Selectable computer and monitor options

- Computers are available as desktop or rack mount with mouse operation and/or touchscreen operation providing convenient user interface
- Desktop LCD widescreen, high resolution LED backlit monitors are 24 in. class, 23.8 in. (605 mm) diagonal, provide 1920 x 1080 resolution, and are available with or without touchscreen
- Wall mount LCD widescreen, high resolution monitors are 42 in. (1067 mm) diagonal, provide 1920 x 1200 resolution, and are available with or without touchscreen
- Rack mount LCD high resolution monitors are 19 in. (483 mm) diagonal

\* See CSFM Listing 7300 0026:323 for allowable values and/or conditions concerning material presented in this document. At the time of publication only UL and ULC listings are applicable to ES Net network products. Additional listings may be applicable; contact your local Simplex product supplier for the latest status. Listings and approvals under Simplex Time Recorder Co. are the property of Tyco Fire Protection Products.

with touchscreen and provide 1280 x 1024 resolution

## Description

### Network annunciation

TrueSite Graphic Annunciators provide annunciation and status display for Simplex Fire Alarm Networks using a personal computer based graphical interface with a high resolution, color display.

### Operation

When fire alarm network status changes occur, the screen displays the type and location of the alarm, or other activity, and the appropriate header buttons appear. In the historical log screen, see Figure 7, Fire, Priority 2, Supervisory, and Trouble buttons are shown with an active Trouble indicated.

### Sample screens

Figure 6 is representative of historical log screen detail. Figure 7 is representative of a system graphic screen with icons representing the devices of interest. You can configure screen choices in accordance with system preference. However, when using multiple optional monitors, multiple windows can be visible simultaneously for operator convenience.

### Ease of operation

With touchscreen monitors, the operator touches the screen area in alarm, or uses the mouse control, to access a more detailed view of the alarmed zone or device. With the proper password access, the operator can acknowledge alarm and trouble conditions, activate signal silence, and perform system reset directly from the workstation screens.

### Programmable activity timeout

Programmable activity timeout allows an unattended monitor to revert to the login screen when the configured time expires.

### Individual user preferences

The following individual user preferences appear when the user logs in:

**Table 1: Individual user preferences**

Preference category	Options
Font size	Default or large
Toolbar size	Small or large
Interface Theme	MS Office 2003 or System
Floating window options	Select to show Menu bar or show Tool bar.

### Historical log and list details

Figure 6 shows historical log details. The display format is similar to the display for active list items such as the alarm list. You can sort the displayed information on-screen by each category shown. For example: number, time, date, and point name. You can review list information on the screen or print at a local or remote system printer.

### Customized response

You can add custom alarm and trouble messages and field edit them to provide operator response assistance. Point specific information, such as hazardous material storage and lists of people to notify, can be automatically or selectively displayed.

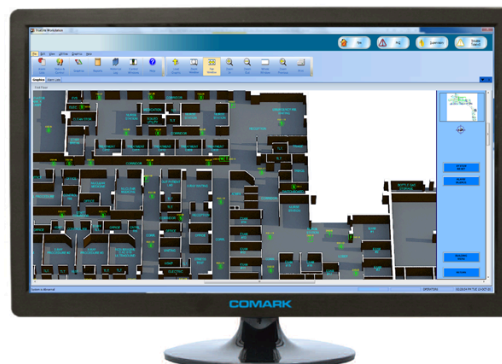
## Password control

### Multiple access levels

Operator access level is determined during log-in. Select functional access to match the training and responsibility of the operator. Operators with additional TrueSite Graphic Annunciator and fire alarm network training may be qualified for access to more detail. For operators who are primarily concerned with immediate facility security, a lower level access provides the information necessary for proper response but does not allow access to areas beyond their training.

## Product image reference

**Note:** Graphics not to scale



**Figure 2: 24 in. desktop monitor**



**Figure 3: 42 in. monitor**



**Figure 4: Desktop PC**



**Figure 5: Rackmount**

## Graphics screens

### Site and floor plan details

Graphics screens can provide easily recognizable site plan and floor plan information. You can customize the level of detail for the specific facility to easily and accurately direct the operator to the immediate area of interest.

### Graphic screen controls

The graphic portion of the screen, see Figure 7, is shown as a main screen but you can set it to float and move it to another monitor. You can add icons to identify the location and type of the device of interest. Use the graphics control toolbar, located at the top of the graphic, to pan and zoom for more precise detail. You can add programmable coverage zones with selectable area and zoom level. You can also add a fixed area site plan, key plan, with action buttons and screen locator, see Figure 7. Pan and zoom are tracked by a green rectangle in the key plan.

### Custom banner and main screen background

You can customize the banner area, see Figure 6. The bitmap area is 2250 x 68 pixels. You can also customize the main screen background that is viewable before login with a bitmap of up to 1000 x 525 pixels.

### Action messages

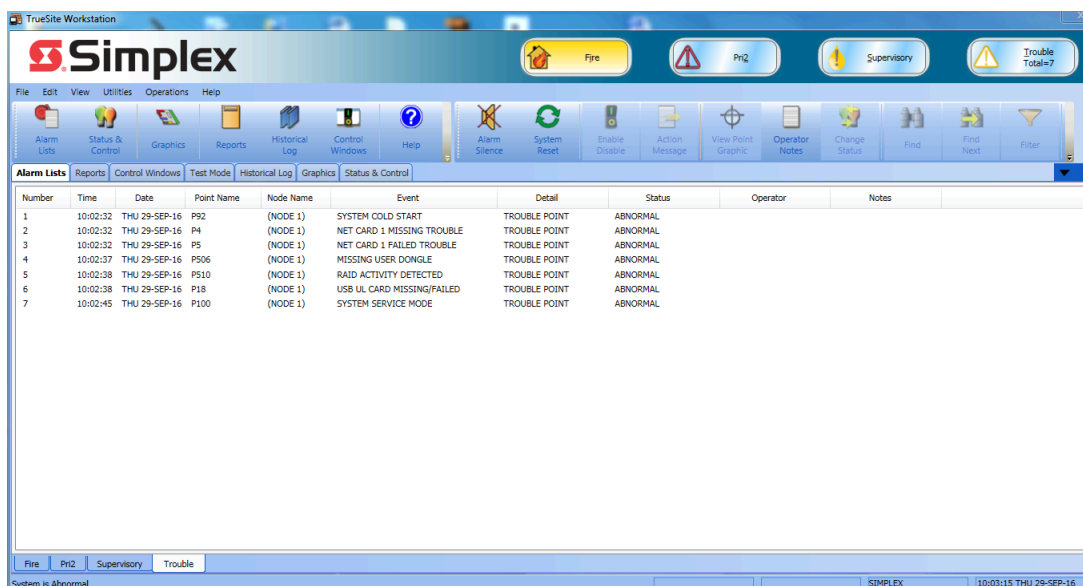
In addition to screen text or graphic information, the operator can view specific action messages that provide emergency response information and directions. These action messages are easily field edited for local requirements. The appropriate action message would be found in the Acknowledge dialog box, see Figure 7.

### Auto-jump to graphics or alarm list

Select whether activity causes a jump to a list format or to the associated graphic screen.

### Supported graphics formats:

- DWG Import Formats: AutoCAD R9, 10, 11-12, 13, 14, 2000-2002, 2004-2006, 2007-2009, 2010-2011
- DXF Import Formats: AutoCAD R14 and 2000
- Export Formats: AutoCAD 2000 DWG/DXF format (allows editing in AutoCAD 2000 or later)
- Import drawing files: DWG, WGS, IMS/GCC DOC files, WMF, BMP, GIF, and JPG



Number	Time	Date	Point Name	Node Name	Event	Detail	Status	Operator	Notes
1	10:02:32	THU 29-SEP-16	P92	(NODE 1)	SYSTEM COLD START	TROUBLE POINT	ABNORMAL		
2	10:02:32	THU 29-SEP-16	P4	(NODE 1)	NET CARD 1 MISSING TROUBLE	TROUBLE POINT	ABNORMAL		
3	10:02:32	THU 29-SEP-16	P5	(NODE 1)	NET CARD 1 FAILED TROUBLE	TROUBLE POINT	ABNORMAL		
4	10:02:37	THU 29-SEP-16	P506	(NODE 1)	MISSING USER DONGLE	TROUBLE POINT	ABNORMAL		
5	10:02:38	THU 29-SEP-16	P510	(NODE 1)	RAID ACTIVITY DETECTED	TROUBLE POINT	ABNORMAL		
6	10:02:38	THU 29-SEP-16	P18	(NODE 1)	USB UL CARD MISSING/FAILED	TROUBLE POINT	ABNORMAL		
7	10:02:45	THU 29-SEP-16	P100	(NODE 1)	SYSTEM SERVICE MODE	TROUBLE POINT	ABNORMAL		

Figure 6: TrueSite Workstation sample alarm lists screen

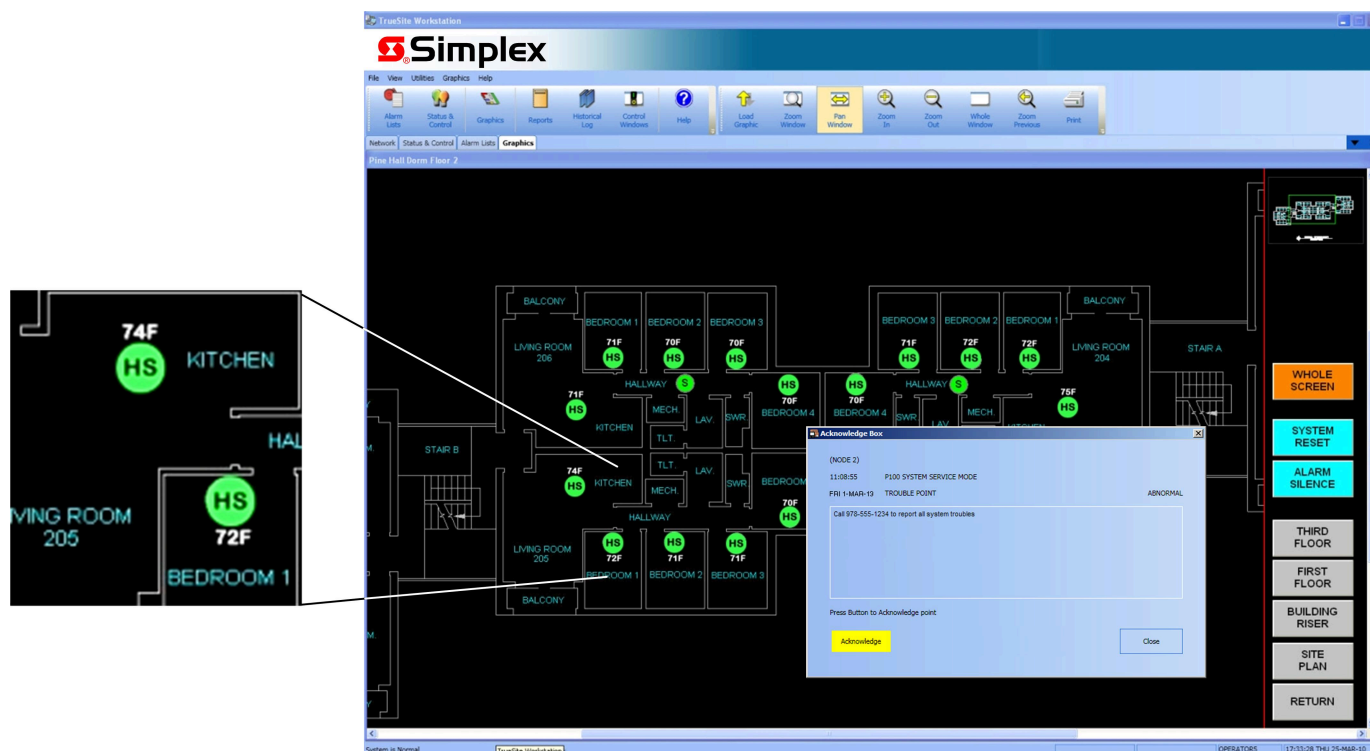


Figure 7: TrueSite Workstation sample graphic screen with detail enlargement and Acknowledge Box

**Note:** This sample graphic screen demonstrates heat sensors (HS) dynamically displaying their local temperature readings.

### Hardware reference with 24 in. desktop monitor and 19 in. rack mount monitor

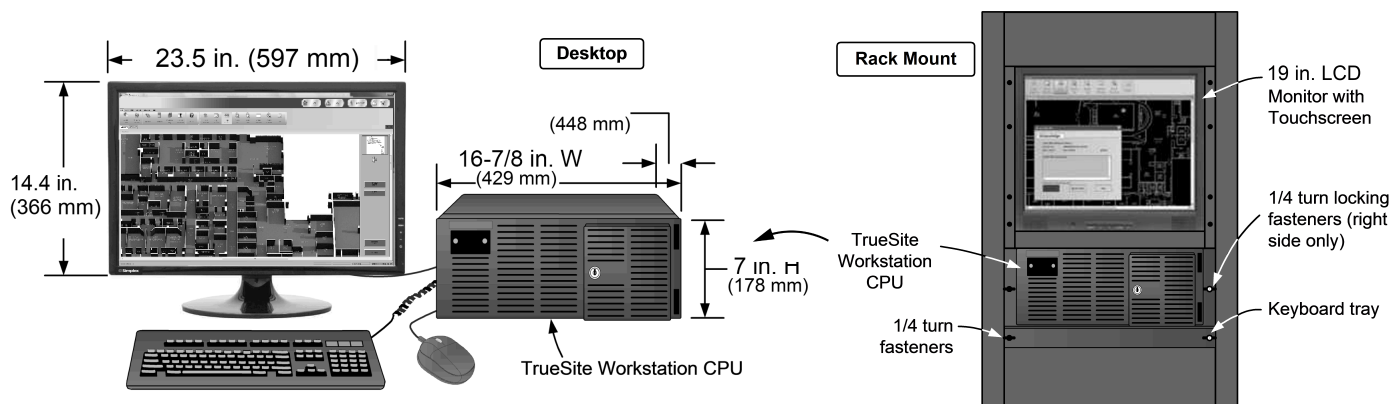


Figure 8: Hardware example

## Network diagnostics

### Graphical network status views

Automatic, built-in diagnostics are available to provide graphical views of Network topology and Network status. Missing communications links due to wiring breaks or shorts as well as inactive network nodes are indicated clearly to guide in returning the system to normal. Information screens are available to provide detail about each specific network node. Network level functions such as timekeeper node and monitor node are indicated as well as identification of the node being used for the diagnostic.

### Multiple network connections

When extensive network expansion or interconnection of existing separate networks is required, you can connect up to seven network loops in any combination of ES Net and 4120 network loops to the TrueSite TrueSite Graphic Annunciator. Each network loop is connected to its own network interface module allowing the workstation to appear as a node in each individual loop.

With a multi-loop network connection, the TrueSite Graphic Annunciator is a node member of each network loop with up to 98 additional nodes for each loop. This allows up to 686 total nodes and the TrueSite Graphic Annunciator, 687 total, to be interconnected.

## 4120 version compatibility

4120 network product compatibility with TrueSite Graphic Annunciator requires the following software versions:

**Table 2: Fire Alarm Network Interface**

Network Interface	Compatibility
4190 GCC/IMS/NPU	Master Version 2.07 or later
4100U	Master Version 11.03 or later
4100	Master Version 9.02 or later
4020	Master Version 9.02 or later
4010	Master Version 3.01 or later
4002	Network Firmware Version 3.02.92 or later
<b>2120 (SLI) Interface</b>	
2120	Master Version 5.44 or later, Network Interface Version 3.02 or later

### Note:

1. TSW 100,000 4120 network point capacity requires TSW version 3.04, or higher, and ES panels at version 3.03.04, or higher.
2. TSW supports up to 100,000 points from ES series panels on 4120 networks or DACR points only.
3. Other legacy 4000 series panels are limited to a capacity of 62,500 points on the TSW. You can mix with ES series panels reporting above the 62,500 point range.
4. A TSW with a 2120 SLI interface is limited to 62,500 points for the entire system, including ES series panels and DACR points.

## ES Net version compatibility

ES Net product compatibility with TrueSite Graphic Annunciator requires the following software versions:

**Table 3: ES Net software requirements**

Software	Required software version
Network Programmer	2.04 or later
ES Programmer	6.01 or later
TrueSite Workstation	6.01 or later
TrueSite Incident Commander	6.01 or later

**Table 4: ES Net firmware requirements**

Component	Required firmware version
4100ES panel	6.01 or later
4010ES panel	6.01 or later
4007ES panel	6.01 or later
ES Net NIC Application	1.04
ES Net NIC EOS	1.04

### Note:

1. TSW 250,000 ES Net network point capacity requires TSW version 6.01, or later, and ES panels at version 5.03, or later.
2. TSW supports up to 250,000 points from ES series panels on ES networks or DACR points only. The maximum points supported from 4120 networks is 100,000 points.
3. Where TSW supports both ES Net and 4120 network loops, the maximum TSW point capacities are as follows:
  - i. Up to 250,000 ES Net network points and DACR points combined.
  - ii. Up to 100,000 4120 network points. See notes in for additional information.
  - iii. The combination of ES Net, DACR, and 4120 points are not to exceed 250,000 TSW points total.

## Multi-Loop operation features

### Improved survivability

- Individual network loops operate independently
- In the event of loss of one or more loops, remaining loops continue to operate

### Loop independence

You can add new loops without affecting existing loops.

### Assistance with phased-in system expansion

- You can install each loop as a stand-alone network allowing local node programming to evolve as required
- When construction or renovation reaches completion, you can combine loops for coordinated facility protection

### Multi-loop requirements

- Each loop requires a dedicated Network Interface Card

- Supports up to seven network loops in any combination of ES Net and 4120 network loops maximum

## Product selection

**Table 5: Hardware systems**

Model	Description
4190-8406	<b>TrueSite Graphic Annunciator</b> For status annunciation only, does not provide control capability. Requires selection of computer, monitor, and software from Table 6
<b>Note:</b> 1. Requires selection of computer type from Table 7, and applications software from Table 9. 2. LAN connections require Transient Suppressor, see Table 12 for details.	

**Table 6: Software only and aftermarket additions**

Model	Description
4190-8606	TrueSite Graphic Annunciator Software Only package. Refer to Table 20 for computer specifications reference, listings and approvals are not applicable. <b>Note:</b> Windows operating system is not provided. For software only packages purchase operating system locally as required.
4190-8901	Aftermarket hardware addition
4190-8605	Aftermarket software addition

**Table 7: Computer type, select one as required**

Model	Description
4190-7026 4190-7028	Desktop Computer with Intel i7, 2.4 GHz CPU, 6MB Cache, 8GB RAM, a minimum of two 1TB Hard Drives, USB ULIO card, DVD R/W, integral audio and amplified speakers, onboard video for up to two displays one SVGA and one DVI, two RS-232 Serial ports, seven USB ports, two Gigabit LAN ports, Passive backplane with eight PCI, three PCIe x 1 and one PCIe x 16 slot, USB keyboard and mouse, charcoal grey housing. Computers are pre-installed with Windows 10 Enterprise 64 bit, including software package and license, and TrueSite Workstation software. 4190-7026 is configured with a file Backup utility and no RAID controller, 4190-7028 is configured with RAID 1 data mirroring and no file Backup utility.

**Table 8: LCD color monitor**

	Model	Size, Diagonal	Description	
Monitor Only	4190-7131	21.5 in. (546 mm)	LCD Monitor for desktop applications	Select one minimum, four maximum, as required per computer choice. Connect as SVGA or DVI, both cables are included. Touchscreen models include separate serial controller cable, black or charcoal grey housings. For 3 or 4 monitors select 4190-6038 (32-bit OS) or 4190-6039 (64 bit OS) Dual Video Card as required, see below
	4190-7132	23.8 in. (605 mm)	LCD Monitor for desktop applications	
	4190-7114	42 in. (1049 mm)	LCD Monitor for horizontal wall mount applications	
Monitor with Touchscreen	4190-7233	21.5 in. (546 mm)	Desktop	LCD Monitor with touchscreen and built-in serial controller
	4190-7235	23.8 in. (605 mm)	Desktop	
	4190-7234	18.5 in. (470 mm)	Rack Mount	
	4190-7214	42 in. (1049 mm)	Wall Mount	

**Table 9: Applications software, select one per application**

Model	Description
4190-5055	TrueSite Graphic Annunciator Software. Requires selection of 4190-8406 or 4190-8606
4190-5063	TrueSite Incident Commander Graphic Annunciator to TrueSite Incident Commander Workstation Upgrade. Upgrades TrueSite Incident Commander Graphic Annunciator to full TrueSite Incident Commander control capability. It requires 4190-8605. <b>Note:</b> Refer to data sheets S4190-0020 and S4190-0016 for additional control capability information and other options available with this selection for more information.

**Table 10: Software feature option**

Model	
4190-5067	TrueSite Workstation Mobile Client Feature. Quantity of one, enables TrueSite Graphic Annunciator information to be accessed from compatible mobile devices. Access for mobile clients is enabled by entering an authorized feature code at the server. See data sheet S4190-0024 for more information
4190-5068	ES Net Supplemental Traffic feature. Enables support of supplemental traffic for TrueSite Workstation and allows for remote client connections to TSW from any nodes on the ES Net network.  <b>Note:</b> Available only if Control Operations (4190-5063) is added. For further information regarding supplemental traffic, refer to data sheet <i>ES Net Network Applications, Communications, Options and Specifications (S4100-0076)</i> .

**Table 11: Internal hardware options, select as required**

Model	Description
4190-6034	Quad RS-232 Serial Port Card, select when more than two serial ports are required; may be needed for 2120 SLI connections; <b>PCI Slot card</b> with pluggable terminal block output; up to 2 maximum; one 4190-6026 suppressor is required per connection (see below)
4190-6049	Dual Video Card for 64 Bit Operating System, PCIe x 16 Slot, 2 DVI outputs; select one for support of 3 or 4 monitors; Note: Dual monitor support is standard; onboard video is used for first two monitors, use optional 4190-6049 video card for monitors 3 and 4

**Table 12: Transient suppressed connectors, select as required**

Specification	Rating
4190-6002	Transient Protected Connector, select one per connection to a standard RS-232 serial port
4190-6026	Transient Protected Connector for Quad Serial Port Card; one required per connection
4190-6010	Transient Suppressor for LAN/WAN connection. Required for agency listing for each TrueSite Graphic Annunciator LAN/WAN connection

## TrueSite Incident Commander Network product selection

### 4120 network options

**Note:** For additional information on 4120 Networks and 4120 network product specifications see data sheet *4120 Network Applications, Communications, Options and Specifications (S4100-0056)*.

**Table 13: 4120 network options**

Option	Configured	Aftermarket	Description	Size	Alarm/Supv.
Network Interface Modules, 7 maximum	4190-6061	4190-9829	Modular network interface card, select media modules separately, listed in the following rows. PCI slot card, supports Class B or Class X operation	1 PCI slot	46 mA
Media Modules for Modular Network Interface, as required	4190-6036	4190-9822	Wired Media	N/A	55 mA
	4190-6301	4190-9851	Left port, single-mode 4120 duplex fiber media card	N/A	55 mA
	4190-6302	4190-9852	Right port, single-mode 4120 duplex fiber media card	N/A	55 mA
	4190-6303	4190-9853	Left port, multi-mode 4120 duplex fiber media card	N/A	55 mA
	4190-6304	4190-9854	Right port, multi-mode 4120 duplex fiber media card	N/A	55 mA

### ES Net network options

**Note:** For additional information on ES Net networks and ES Net network product specifications see data sheet *Addressable Fire Detection and Control Basic Panel Modules and Accessories (S4100-0076)*.

**Table 14: ES Net external NIC for TSW product selection**

Model	Enclosure	Description	Power	Size	Alarm/Supv.
4190-9832	Red	Connects a TSW or Incident Commander to an ES Net loop. ES panel network supports Class B or Class X operation, TSW connections are Class B. Includes four built in Ethernet ports, supports one additional media card. Ports A and C have earth fault detection.	120/240 VAC	Wall mount enclosure measures 10 in. x 10 in. x 2.5 in.	120 mA
4190-9833	Platinum		120/240 VAC		
4190-9834	Red		24 VDC		
4190-9835	Platinum		24 VDC		

**Table 15: ES Net NIC cards for 4100ES or TrueSite Workstation**

Model	Card type	Description	Size	Alarm/Supv.
4100-6104	Slot - install to a single slot in a 4100ES bay	Mounts in 4100ES cabinet. Connects a 4100ES FACU, TrueSite Workstation, or Incident Commander to an ES Net Network. Supports Class B or Class X operation. Includes four built in Ethernet ports, install to a single slot in a 4100ES bay. Supports up to two additional media cards. Ports A and C can be configured for earth fault detection.	One slot of a 4100ES bay	120 mA
4100-6310	Flat - install to any (2) vertical block space in a 4100ES bay		2 vertical blocks	

**Note:**

1. Network interface cards include built-in Ethernet network communication ports, order optional media cards as required.
2. TrueSite Workstation connection is Class B, for Class X networks TSW connection must be 20 ft (6 M) maximum in conduit.
3. For TSW or Incident Commander UL 1610 Central Station Burglar Alarm Control Unit applications use the 4190 series External NIC.

**Note:** TrueSite workstation connection is Class B, for Class X networks TSW connection must be 20 ft (6 M) maximum in conduit. Network interface cards include built-in Ethernet network communication ports, order optional media cards as required.

**Table 16: ES Net dual channel media modules for external NIC and 4100ES NICs**

Model	Media card type	Description	Size	Alarm/Supv.
4190-9856	ES Net NIC dual channel Ethernet media card	Select per network-connection requirements; mounts on the supplied ES NICs; one media card per external NIC network interface card. Dual Channel Media Cards provide 2 ports for input and output connections.	N/A	20 mA
4190-9858	ES Net NIC dual channel single-mode fiber media card	Field connections require proper port pairing, refer to <i>579-1258 ES Net Dual Channel Fiber, Ethernet, and DSL Media Card Installation Instructions</i> for additional information.	N/A	135 mA
4190-9859	ES Net NIC dual channel multi-mode fiber media card		N/A	135 mA
4190-9857	ES Net NIC dual channel DSL media card		N/A	155 mA

**Table 17: Fire Alarm Ethernet Switch**

Model	Type	Description
4190-6050	Eight wired Ethernet connections	Fire Alarm Ethernet Switch, 24 VDC, red cabinet; with Earth Detection on wired connections UL 864 and ULC S527.
4190-6054	Four wired Ethernet connections and two single-mode fiber optic connections	<b>Note:</b> Each server and client LAN connection requires a 4190-6010 Transient Suppressor, except for server to client connections when both are in the same room; see below for suppressor details; Ethernet Switch power shall be provided by a listed fire alarm power supply; see data sheet S4190-0018 for more information.
4190-6055	Four wired Ethernet connections and two multi-mode fiber optic connections	

## TrueSite Graphic Annunciator equipment specifications

**Table 18: Computers and accessories, see note**

Model	Description	Dimensions	AC power input*
4190-7026 4190-7028	Desktop Computer	16 7/8 in. W x 7 in. H x 17 5/8 in. D (429 mm x 178 mm x 448 mm)	2 A @ 120 VAC, 60 Hz (240 W) Operating Range: 95-132 VAC; 180-264 VAC, auto-range; 50/60 Hz

**Note:**

1. Equipment and specifications may vary due to equipment design changes
2. Products are Agency listed for 120 VAC. Computers and monitors are shipped with 120 VAC cord, NEMA 5-15P plug to IEC-320 C-13 connector. For use with other voltages, locally obtain a cord in compliance with local safety standards.

**Table 19: LCD monitors, see note**

Model	Description	Dimensions	AC power input, see note
4190-7131	21.5 in. desktop	20 3/16 in. W x 15 in. H x 6 3/4 in. D (513 mm x 381 mm x 171 mm)	0.4 A @ 120 VAC, 60 Hz (48 W) Operating Range: 100-240 VAC, 50/60 Hz
4190-7233	21.5 in. desktop with touchscreen	20 3/16 in. W x 15 in. H x 8 11/16 in. D (513 mm x 381 mm x 221 mm)	
4190-7132	24 in. desktop	23.5 in. W x 14.4 in. H x 1.6 in. D (597 mm x 366 mm x 42 mm)	DC 12V, comes with external AC-DC Adapter (90-264VAC 50/60Hz)
4190-7235	24 in. desktop with touchscreen	23.5 in. W x 14.4 in. H x 1.6 in. D (597 mm x 366 mm x 42 mm)	
4190-7234	18.5 in. Rack Mount with Touchscreen	17 3/4 in. W x 11 1/16 in. H x 2.022 in. D (451 mm x 281 mm x 51.4 mm)	1.5 A @ 120 VAC, 60 Hz Operating Range: 100-240 VAC, 50/60 Hz
4190-7114	42 in. Horizontal Wall Mount	41 5/16 in. W x 25 1/4 in. H x 5 in. D (1049 mm x 641 mm x 127 mm)	2.02 A @ 120 VAC, 60 Hz (243 W) Operating Range: 100-240 VAC, 50/60 Hz
4190-7214	42 in. Horizontal Wall Mount with Touchscreen		

**Note:**

- Equipment and specifications may vary due to equipment design changes
- Products are Agency listed for 120 VAC. Computers and monitors are shipped with 120 VAC cord, NEMA 5-15P plug to IEC-320 C-13 connector. For use with other voltages, locally obtain a cord in compliance with local safety standards.

**Table 20: Computer minimum specifications reference, see note**

Specification	Rating
Enclosure, see note	Passive backplane with: 7 PCI slots and 1 CPU slot; security features: key lock reset switch; fan monitor card; locked door protecting access to the CD/DVD R/W drives and one front mounted USB port
Computer, see note	Compatible with Microsoft Windows 10 32 and 64 bit operating systems, see page 1 for specific operating system compatibility, Intel i7 2.4 GHz CPU, or Core 2 Duo 2.1 GHz CPU, 4 GB RAM, 160 GB minimum hard drive; 2 Serial ports, 1 Parallel port, 4 USB ports, dual Gigabit LAN ports, USB keyboard and mouse; SVGA video output with 16 MB VRAM, CD/DVD Drive, PCI and ISA slots, as required, integral audio and amplified speakers, additional ports as required for custom features. For example: USB, Serial, Parallel

**Note:** Simplex 4190 Series computers are Agency listed for use with TrueSite Graphic Annunciator software. For applications where Agency listings are not required, TrueSite Graphic Annunciator software should be compatible with most computers meeting the stated minimum specifications. However, due to computer manufacturers potentially using unique or proprietary drivers, hardware, or other software not tested with TrueSite Graphic Annunciator software, there may be incompatibilities. If other computers are used, proper operation with TrueSite Graphic Annunciator software may require technical adjustments by a qualified computer technician and would be the sole responsibility of the computer supplier and computer manufacturer.

**Table 21: Computer port reference, 4190-7026, 4190-7028**

Specification	Rating
RS-232 Serial Ports	Two standard, up to 9 total with optional 4190-6034 Quad Serial Port Card
USB Serial Ports	Seven total; five in the rear and two in the front behind the locked door
Ethernet Ports	Two Ethernet ports and one Parallel port
Event Printing, see note in Table 22	For agency listed Proprietary Supervising Station operation and for other operations, if an event printer is required, a supervised and dedicated Simplex Model 4190-9027 agency listed dot matrix printer is recommended. The connection is to USB or Serial RS-232 Port of the Server PC, refer to data sheet <b>S4190-0027</b> for printer details.
Other Printing, see note in Table 22	For report, screen, or graphics printing, a Windows compatible printer can be used. Connection can be USB, Serial RS-232, or LAN/WAN connection via Ethernet
Printable Information	Event printing, with supervised and dedicated dot matrix printer 4190-9027 as explained above
	Auto-print of auto-jump graphics; prints to Windows default printer
	Reports: Historical logs, System Activity, TrueAlarm Status, TrueAlarm Service, TrueAlert Self-Test, Analog Monitor ZAM Calibration, and Active List; displayed reports can print to a LAN connected, unsupervised printer
	Screen captures, configurable as negative images to reverse black backgrounds

**Table 22: Environmental specifications**

Specification	Rating
Operating temperature	32 °F to 120 °F (0 °C to 49 °C)
Operating humidity	Up to 93% RH, non-condensing, at 90 °F (32 °C)
<b>Note:</b> Parallel port printer connection is supported on 32-bit operating systems only.	

## Anti-virus software

When the TrueSite Graphic Annunciator is connected to a TCP/IP network other than a dedicated Fire Alarm network, it is highly recommended that regularly updated anti-virus software protection be installed on each connected computer. The TrueSite Graphic Annunciator has been verified as compatible with McAfee Total Protection version 16.0 R29 and Norton LifeLock 22.20.5.29.

## Additional network product reference

**Table 23: Additional network product reference**

Subject	Data Sheet
4100ES Basic Panels with SPS Power Supplies	S4100-0031
4120 Network Products and Specifications	S4100-0056
ES Net Network Products and Specifications	S4100-0076
4100ES Basic Panels with EPS Power Supplies	S4100-0100
Fire Alarm Ethernet Switches for TrueSite Workstation	S4190-0018
TrueSite Incident Commander Graphic Annunciator	S4190-0023
Mobile Client for TrueSite Graphic Annunciator	S4190-0025