

# The New Direction of Safety.

How the TrueAlert ES line of addressable appliances is transforming notification at every stage of a project.

## DESIGN



**Extremely flexible wiring** means fewer restrictions and design roadblocks

**Highly scalable architecture** allows for system growth and expansion

**Sleek, streamlined look** blends in with building decor

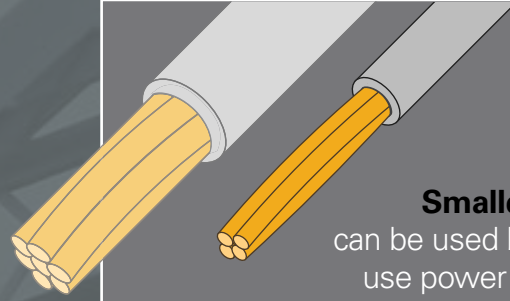
**Efficient power can** mean longer wire runs and more appliances per circuit. Plus, fewer power supplies can lower equipment installation and maintenance costs



## INSTALLATION

**TrueStart test instrument** allows contractors to test as they go, without a panel

- Can find and eliminate wiring problems and device addressing errors
- Designed to make installation and commissioning easier, faster and hassle free



**Smaller gauge wiring** can be used because devices use power more efficiently. Cable is easier to pull, **greatly reducing labor and installation time.**

**Significant savings** over conventional installation

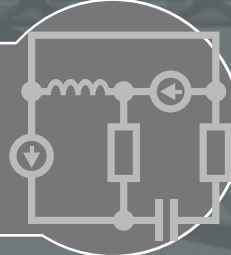
**Less time required** to get the job done



**No need for shielded cable** intended to reduce potential for ground faults



**T-tap architecture** makes system layouts easier and expandable



**No end of line resistors** required

## OPERATION

### Supervised appliances

- Faults and damage are detected and reported back to the panel
- Devices named individually, so they're easier to identify and repair

### Self testing can result in:

- Better protection
- Less disruption to business operations
- No costly after-hours testing

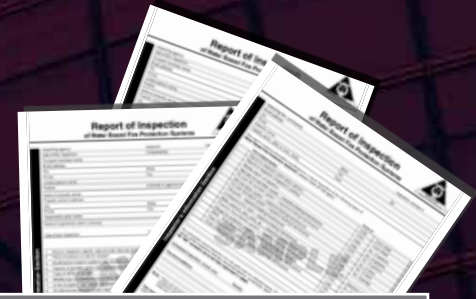


**Built-in light and sound sensors** enable self testing

**Backwards compatibility** enables existing systems to easily upgrade to TrueAlert ES



**Stronger documentation capabilities** for ease of compliance



## ADDRESSABLE, COST-EFFECTIVE, SELF-TESTING DEVICES



### TrueAlert ES Audio Speakers

Fire alarm speakers featuring PA sound quality.



### TrueAlert ES 5900 Series Appliances

Compact design with bigger energy savings.



### TrueAlert ES Multi-Tone Appliances

A versatile approach to NFPA 72 Low Frequency (520 Hz) compliance.